

# ArtSpan Benefactor Art Tour

Pictured: Darwin by Roger Berry at The Oliver Ranch

By Rachelle Reichert  
Photos by Lisa Hasenbalg

Our ArtSpan Benefactors are an essential part of our community, and to express our gratitude for their support, ArtSpan arranged a special cultural outing for them this past May. On an early San Francisco morning, ArtSpan set out on a day trip to the heart of Sonoma County for a private tour of The Oliver Ranch, featuring one of the most ambitious collections of site-specific sculpture in the United States, followed by a stop at Warnecke Ranch and Vineyards, home of the Chalk Hill Artist Residency.

We arrived at The Oliver Ranch, where Steven and Nancy Oliver presented their collection of 18 remarkable installations by world-renowned artists. The patrons of the collection personally guided ArtSpan Benefactor Members through the 100-acre property overlooking the Alexander Valley and spoke about their own unique connection to each of the pieces. Highlights included work by Richard Serra, Bruce Nauman, Martin Puryear, Bill Fontana, and Andy Goldsworthy. The tour concluded with artist Ann Hamilton's *The Tower*, which also serves as a site for commissioned dance, poetry, and performance pieces.

Following this notable experience, the Benefactors were shuttled to nearby Warnecke Ranch, where they lunched in the vineyard and toured the newly created Chalk Hill Artist Residency. Implemented in 2011 during the centennial year of Warnecke Ranch, the Residency honors their grandfather's vision: to ensure that artists are inspired by what he deemed to be the most beautiful place in the world.

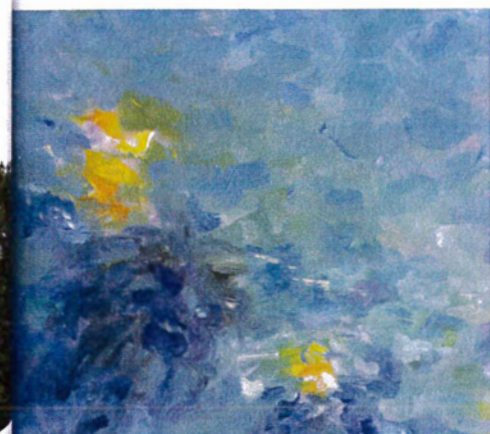
The Chalk Hill Residency houses two artists at a time in its 1920s farmhouse; studio spaces are located in repurposed rustic barns on the property. The Warneckes support creativity and community engagement by offering artists an encouraging and inspiring place to realize their work. The Residency also strengthens the artists' connection to the residents of Sonoma County and provides opportunities to artists working with disabilities.

This breathtaking day offered Benefactors the opportunity to explore the arts of the greater Bay Area and to learn about the many initiatives that are supporting artists. ArtSpan headed back to San Francisco filled with inspiration and admiration for the fundamental power of the arts on the human spirit.

For information about joining ArtSpan's Membership program, visit [www.artspan.org/get-involved/membership-options](http://www.artspan.org/get-involved/membership-options)



*The Tower at The Oliver Ranch, designed by Ann Hamilton which features two double helix staircases.*



## Remembering Thierry Rosset

By Jenny Robinson

Thierry Rosset, an artist member of the Printmakers and SF Open Studios, passed peacefully in Normandy, France, where he spent his summers as a boy and where he had a home by the sea. After retiring from a very interesting career in the French Foreign Service, Thierry moved to San Francisco with his wife, Martine Jardel, who is also a painter.

I was a big fan of Thierry's relief prints long before I met him. He exhibited widely in the Bay Area and donated his work generously to charitable causes, so we often cropped up in many of the same places. When I did eventually meet him, I thought I was completely lovely, and we hit it off immediately. We schmooze, which he did with great enthusiasm.

One of the things I always really admired about Thierry was his openness as possible. They truly made the most of the conditions. I was lucky enough to trade artwork with him.

Thierry reached a ripe old age and had, by all accounts, more than that, can we? I will miss the banter.

## Remembering Eveni Levi

By Ernie Rivera

I first met Eveni in the early '70s while attending the San Francisco Art Institute, but our involvement in the San Francisco Arts Commissions' Neighborhood Arts Program (NAP) truly solidified our friendship. Through the NAP, Eveni was instrumental in founding the Samoan Arts Workshop, housed in a newly acquired building in the South of Market district, now the SOMArts Cultural Center, where I am the director of Tech Services. The program hosted public events that showcased the art and culture of Pacific Islander communities as well as their traditional foods—one event featured a pig roast in the garden! Participants from workshops created productions to promote the art and culture of Samoa, while SOMArts Tech showed support by building the stage and in lighting and sound. Through these events, Zeke Fua-Popo, and Carlos Villa helped to bring Islander culture to a wider audience.

In recent years, Eveni established a vibrant and active artist community behind the Noonan Building 70. SOMArts is dedicated to assisting local artists' work site, located just next door to the Open Studios. By organizing this event, he inspired

Shortly after Eveni's death, I took a trip to the island to encourage Eveni to go with me. We had gone to Reggae on the River, to name a few. I especially had my intention was to focus on my heritage. I was at a Sundance ceremony at Crow Dogs Paradise. American events evoked similarities between honoring elder chiefs, show respect to women at the participation of children, and value generational

My life with Eveni revolved around a sense of connection to an ancient past, and we recognized that in each